



📍 18 Littlemead, Ashley, Ashley, Box, Wiltshire, SN13 8AH

🏠 Guide Price £675,000

An Excellent 4 Bedroom Detached Family Home beautifully presented to a very high standard, positioned in this sought-after 'no through road' and enjoying wonderful far-reaching views.

- 4 Bedroom Detached Family Home
- Wonderful Far Reaching Views To The Front
- Beautifully Presented Throughout to a High Standard
- Excellent Access to Bath & Corsham Along A4
- Two Generous Sized Reception Rooms
- Delightful Gardens to the Front and Rear
- Garage and Large Driveway
- Sought After Village Location

🏡 Freehold

🏠 EPC Rating C



Positioned at the head of a no-through road in the sought-after village location of Ashley with commanding far-reaching views to the front, we are delighted to bring to the market this beautifully presented four-bedroom detached family house. The property has been greatly updated and improved by the owners to create a light, spacious and contemporary feel throughout, and comprises an entrance hall with a downstairs cloakroom plus doors to the sitting room located to the front with the views, along with a wood-burning stove. From here, there is a door to the separate dining room to the rear with doors leading out onto the rear garden, giving ample space for entertaining. The kitchen has recently been replaced with a gloss finish contemporary kitchen with a central breakfast island and several integrated appliances. From here, there is a door leading to a very handy utility room, plus the single integral garage. Moving upstairs, there are three double bedrooms and one single bedroom, along with a separate bathroom and a separate shower room. Outside the terraced rear garden faces approximately South West, enclosed by bushes and timber fencing/trellis, there is a generous patio providing great space to entertain with a rocky garden backdrop, with the top terrace laid to gravel with a stepping stone pathway. To the front of the house is a further area of pretty garden, mainly laid to lawn planted with flowers and shrubs to borders. The driveway provides space to park two vehicles as well as providing access to the garage.

Situation

Ashley is a small and picturesque hamlet just outside Box to the East of Georgian Bath. Surrounded by some stunning countryside. Box village enjoys a thriving community supported by a surprising range of amenities including a school, public houses, newsagents, post office, village store, Co-op supermarket, butcher, doctors surgery and pharmacy. The Bath Road service station with a small Budgens mini supermarket less than 200 yards level walk of the property as is the Northey Arms Gastro Pub. Central Bath, famous for its extensive range of cultural, shopping and leisure facilities is within 6 miles. Commuters will be pleased to note that Bath Spa Station offers high speed rail services to London Paddington (90 minutes approximately) Bristol and the West Country, with further links available from Chippenham Station. Easy access is available to the M4 motorway at Junction 18 (Tormarton) via the A46 and Junction 17 (Chippenham) via the A4.

Property Information

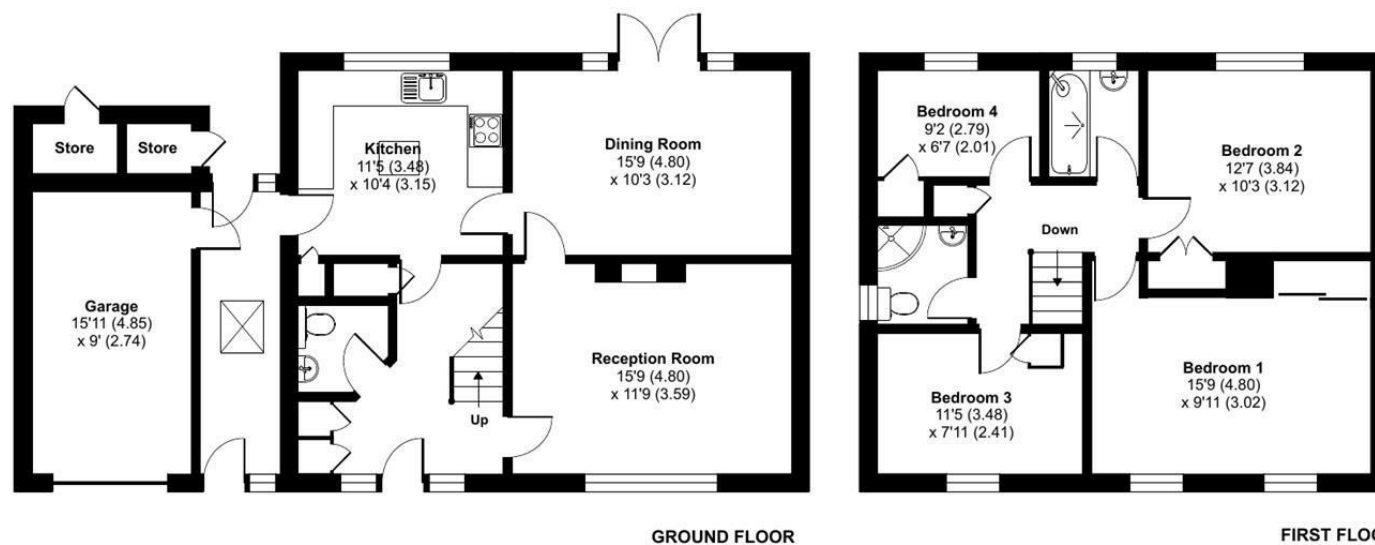
Council Tax Band: F
E.P.C Rating: C
Mains Services
Gas Central Heating



Littlemead, Box, Corsham, SN13

Approximate Area = 1502 sq ft / 139.5 sq m (Includes garage)

For identification only - Not to scale



 Floor plan produced in accordance with RICS Property Measurement 2nd Edition, Incorporating International Property Measurement Standards (IPMS2 Residential). © ntechcom 2025. Produced for Strakers. REF: 1318438

Disclaimer These particulars, whilst believed to be accurate are set out as a general outline only for guidance and do not constitute any part of an offer or contract. Intending purchasers should not rely on them as statements of representation of fact, but must satisfy themselves by inspection or otherwise as to their accuracy. No person in this firm's employment has the authority to make or give any representation or warranty in respect of the property. All measurements and distances are approximate only. Your home is at risk if you do not keep up repayments on a mortgage or other loan secured on it.